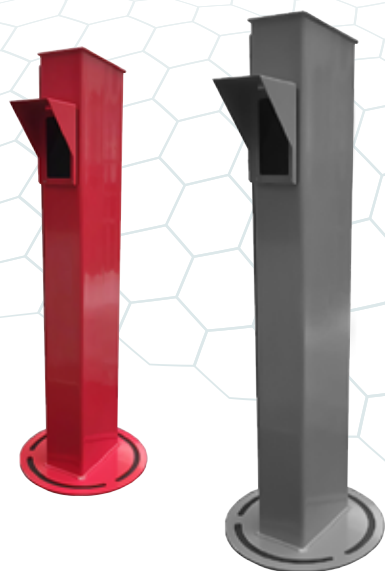


TOTEM NANOPAK 5



Reliable, standalone, triggerless and easy to install **LPR Camera**, cased in a versatile totem, ready to use.

- **All Integrated:** LPR is performed entirely inside the camera, [no LPR server needed](#).
- **Fast:** Realtime reading of the license plate.
- **No Trigger needed:** The fastest option for [frictionless](#) applications.
- **Easy to Install:** The TOTEM integrates the entire electrical and electronic system. It bolts easily and securely to the ground.
- **Adjustable Recognition Distance:** From 5 ft (1.5 m) to 25 ft (7.5 m).
- **Customizable:** The color of the Totem can match your installation.
- **Dry Contact:** To directly control a barrier.
- **CST Ready:** Monitoring tool for validating [camera's installation and performance](#).

LPR that Commits!

Includes a Contractual Guarantee of Performance.

Satisfied or Refunded!

APPLICATIONS



PARKING



ACCESS CONTROL

LICENSE PLATE RECOGNITION

	European plates (long)	Americas Plates (short)
Recognition distance	From 7 to 20 ft (2 to 6 m)	From 5 to 15 ft (1.5 to 4.5 m)
Coverage width	Up to 13 ft (4 m)	Up to 10 ft (3 m)
Recognition Engine	SURVISION REALTIME EMBEDDED AI ENGINE (SREIE)	
Recognition framerate	60 fps	
Recognition direction	Both (Rear and Front)	
Max vehicle speed	Up to 155 mph (250 km/h)	
Triggering	Free Running (no trigger) - Software Trigger - Hardware Trigger	
Confidence Ratio	Yes	
Recognition JPEG	Yes (4 different formats), adjustable quality	
Square plate formats supported	Yes	
Countries supported	All countries provided simultaneously (contact sales@survisiongroup.com for up-to-date list)	
Other data supplied	Plate position, Direction of traffic, Country, State, Type	
Realtime video flow	Yes	

VIDEO AND ILLUMINATION FEATURES

Lighting	5 strong power IR (850 nm) or White Light LEDs
CMOS	FHD 2 MPixels Black & White or Color
Compression	H264
Transport Protocol	RTSP
Available settings	Framerate (up to 30 fps), Bitrate, Zoom

ELECTRICAL CHARACTERISTICS

	TOTEM NANOPAK 5 AC	TOTEM NANOPAK 5 DC
Power supply	100-240 VAC ; 50/60 Hz	24 V +/- 3V
Power Consumption	Average 7 W, max 8 W @ 60 fps	

MECHANICAL CHARACTERISTICS

	Front Reading	Rear Reading
Weight	22 lbs (10 kg)	26 lbs (12 kg)
Dimension (LxWxH)	5.51 x 3.14 x 28.74 in (140 x 80 x 730 mm)	5.51 x 3.14 x 39.37 in (140 x 80 x 1000 mm)
Coating	RAL7048	RAL7031
Material	Stainless steel	
Water&Dust protection	IP54	
Connectors	Ethernet RJ45 + MOLEX Mini Fit JR	
Operating and storage temperature	From -40 °F to +131 °F (-20 °C to +55 °C)	

ENVIRONMENTAL AND TECHNICAL CERTIFICATIONS

Security	SSL (TLS 1.2), 802.1x, 802.1q
Photobiological Safety	IEC62471
Homologation	IEC 62368-1:2014, IEC 60950-22:2016, CISPR 32 : 2015 / AMD1 : 2019, CISPR 35 : 2016, FCC 47 CFR PART 15: 2021, ICES-003 / NMB-003 édition 7: 2020 et ICES-Gen / NMB-Gen : 2018, EN 62368-1:2014/A11 :2017
MTBF	70 000 hours minimum
Time Synchronization	NTP Protocol

DATA OUTPUT AND INPUT

TCP/IP	SURVISION Open Camera Development Kit (CDK)
FTP	Embedded FTP Client
Ethernet	Ethernet 10/100/1000
Serial	RS485, Wiegand
IO/IN	Optocoupler. Tension min 15 V max 30 V
IO/OUT	Relay Max. 220 VDC 2A
OSDP	Yes
Web Interface	REST webservice and Websocket (SSWS)

ACCESSORIES AND OPTIONS

Power cable	3.3 ft (1 m)
Full signal cable (IO, RELAY)	3.3 ft (1 m)

PART NUMBERS

	Front Reading	Rear Reading
IR (Black characters)	NPK5TOT21AMP	NPK5TOTG21AMP
White Light (Colored characters)	NPK5TOT22AMP	NPK5TOTG22AMP